



8STA shell size 04



Features & Benefits

- Rugged aluminium body to ensure long service life in the harshest environment
- Optimum space & weight saving whilst achieving maximum strength
- Option of either #22 or #26 gold plated crimp contact or PCB contact available
- Environmental sealing from interfacial seal and rear grommet
- Positive locking mechanism with locked colour indicators
- 6 colour- coded keyway orientations
- Boot termination feature
- Conductive black zinc plating

Technical characteristics

Mechanical

- | | |
|---------------------|--------------------------------------|
| • Shell | Aluminium alloy |
| • Shell plating | Conductive black zinc (standard) |
| • Insulator | Thermoplastic |
| • Grommet & seal | Liquid silicone rubber |
| • Contact | Copper alloy |
| • Contact plating | Gold |
| • Endurance | 500 matings/unmatings |
| • Shock | 300 g for 3 ms and EIA-364-27 |
| • Vibration | 147 m/s ² , 10 to 2000 Hz |
| • Contact retention | 35 N (size 26)
45 N (size 22D) |

Electrical

- | | |
|-------------------------|---|
| • Test voltage | 400 Vrms (size 26)
1000 Vrms (size 22D) |
| • Contact resistance | < 16 mΩ (size 26)
< 14.6 mΩ (size 22D) |
| • Insulation resistance | > 5000 mΩ (at 400 Vdc / size 26)
> 5000 mΩ (at 500 Vdc / size 22D) |
| • Contact rating | 3 A (size 26)
5 A (size 22D) |

Climatic

- | | |
|----------------------------|------------------------------------|
| • Temperature range | -55°C to +175°C |
| • Sealing mated connectors | IP67 (1 metre for 30 min. minimum) |
| • Salt spray | 48 hours |

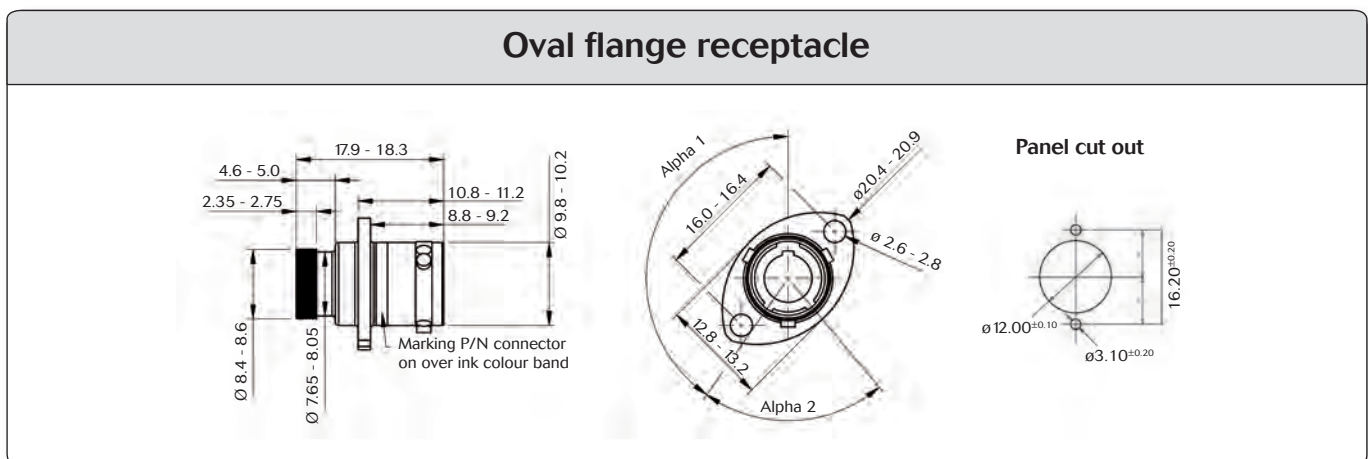
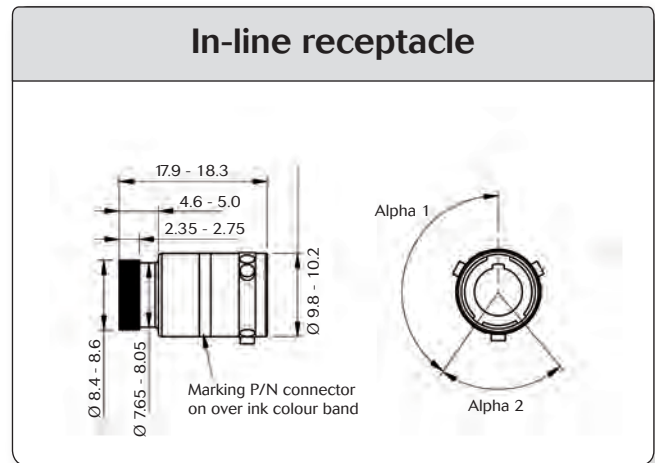
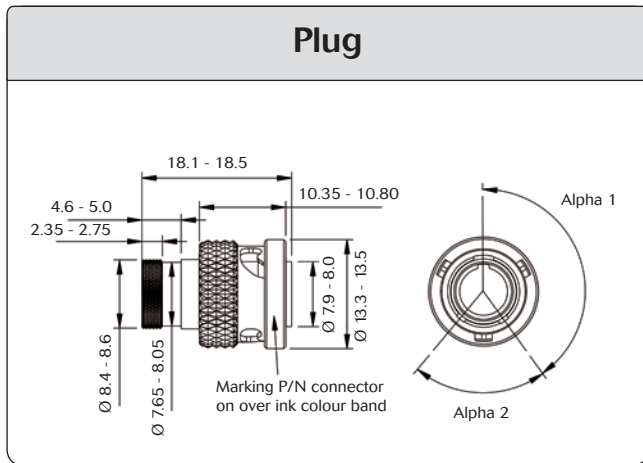


8STA shell size 04

How to order

Basic series	8STA	0	-	04	05	P	N	-
Shell style	0: Oval flange receptacle 1: In-line receptacle 2: Oval flange receptacle with PCB contacts 6: Plug 7: Jam nut receptacle							
Plating	- : Standard version F: Nickel version							
Shell size	04							
Contact layouts	see page 6-8							
Type of contacts	P: Pin contacts S: Socket contacts							
Orientations	N: Red / A: Yellow / B: Blue / C: Orange / D: Green / U: Universal							
Specification	- : Standard version 499: Integrated nut on the flange - M2 insert (only for shell style 0 & 2) - for more details, please see page 45-48 528: Integrated nut on the flange - M2.5 insert (only for shell style 0 & 2) - for more details, please see page 45-48 022: Fuel immersible version - for more details, please see page 53-56							

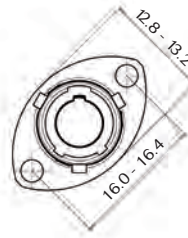
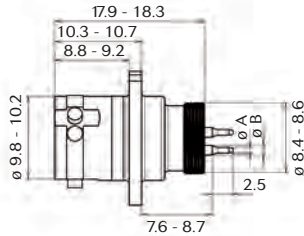
Range presentation



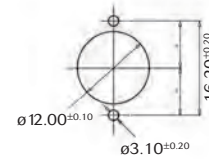


8STA shell size 04

Oval flange receptacle with PCB contacts



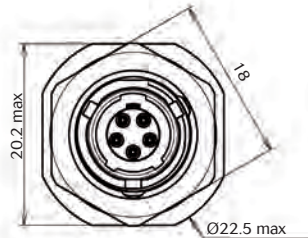
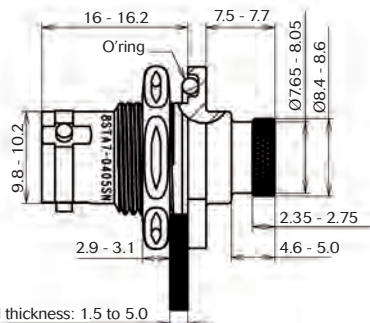
Panel cut out



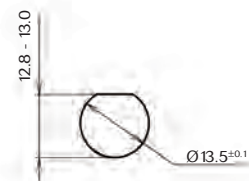
Layouts	Contacts	ø A	ø B
04-35	3 contacts #22D	0.64 / 0.69	1.19 / 1.24
04-05	5 contacts #26	0.49 / 0.54	1.1 / 1.15
04-06	6 contacts #26	0.49 / 0.54	1.1 / 1.15

For contact P/N, please consult us

Jam nut receptacle



Panel cut out



Panel thickness: 1.5 to 5.0

Orientation

Key positions	Alpha 1	Alpha 2	Colour band
N	145°	75°	RED
A	130°	120°	YELLOW
B	110°	120°	BLUE
C	155°	115°	ORANGE
D	90°	115°	GREEN
U	NONE	NONE	NONE

8STA shell size 04



Contacts

Crimped contacts									
Contact size	Contact type	Contact \varnothing	Part numbers	Admissible wire section				External dia. over insulation (mm)	
				AWG		mm ²		Min.	Max.
Crimp contact				Min.	Max.	Min.	Max.	Min.	Max.
22D	Male	0.76	8599-0702 JJ	28	22	0.095	0.38	0.71	1.37
	Female		8599-0710 900						
26 - layout 04-05	Male	0.50	8599-0777 LY	30	24	0.095	0.24	0.60	0.83
	Female		8599-0778 900						
26 - layout 04-06	Male		8599-1001 JL						
	Female		8599-1002 900						

Crimping tools						
Contact size	Wire sizes	Type	Locator part number		Tool part number	
			Spec.	SOURIAU	Spec.	SOURIAU
22D	22 to 28	Male	M22520/2-09	8476-09	M22520/2-01	8476-01
		Female	M22520/2-06	8476-06		
26 - layout 04-05	24 to 30	Male	-	8599-0050		
		Female	-	8599-0051		
Male		-	640 088			
Female		-	640 089			

Accessories

Insertion & extraction tools			
Contact size	Part numbers	Colour	
		Insertion	Extraction
22D	M81969/14-01 (plastic)	Green	White
26 - layout 04-05		-	-
26 - layout 04-06	8599-1006 (metallic)	-	-



Shrinkable termination detail				
	$\varnothing A$	$B^{+0.05}$	$C^{+0.05}$	$D^{\pm 0.05}$
	8.65	8.00	2.70	2.30

Metal protective cap	
Plug cap: 8STA804 	Receptacle cap: 8STA904

Filler plug			
Contact size	Part numbers		Colour
	Spec.	SOURIAU	
22D	MS27488-22	8660-2.12	Black

not available for contact #26